



655 Research Parkway  
Suite 525  
Oklahoma City, OK 73104  
Phone: 405-271-1544  
Fax: 405-271-1545  
E-mail: info@hyalose.com  
www.hyalose.com

## Certificate of Analysis

### Select-HA™ B250

Catalogue No.: HYA-B250-200

Lot No.: B250K-200603

Molecular Mass: 280 kDa

#### Appearance

White powder

#### Quantity

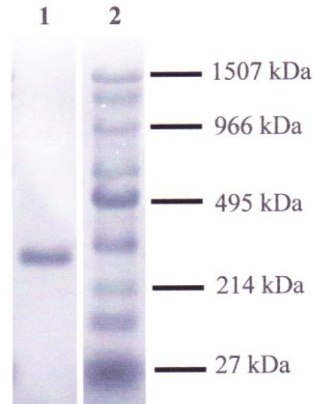
200 pmole (~56 µg)

#### End-label

Biotin

#### Protein content

< 0.1%



**Figure 1. Electrophoretic analysis of Select-HA B250K-200603**

Select-HAs were run on 0.7% agarose gel and stained with Stains-all. **Lane 1**, Lot B250K-200603; **lane 2**, Select-HA™ Ladder (molecular masses are indicated).

#### Molecular Masses

Values as determined by Multi-angle Laser Light Scattering-Size Exclusion Chromatography (SEC-MALLS) are typically within  $\pm 5\%$ .

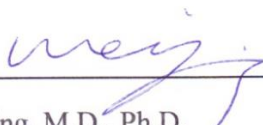
*Mn*: 279.2 kDa

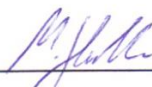
*Mw*: 279.6 kDa

*Mw/Mn*: 1.002

#### QC Acceptance Date

March 2006

  
\_\_\_\_\_  
Wei Jing, M.D., Ph.D.

  
\_\_\_\_\_  
Michael Haller, Ph.D.