



655 Research Parkway
Suite 525
Oklahoma City, OK 73104
Phone: 405-271-1544
Fax: 405-271-1545
E-mail: info@hyalose.com
www.hyalose.com

Certificate of Analysis

Select-HA™ B1000

Catalogue No.: HYA-B1000-200

Lot No.: B1000K-00512

Molecular Mass: 837 kDa

Appearance

Ranging from white crystalline to clear glassy solids

Quantity

200 μ mole (~168 μ g)

End-label

Biotin

Protein content

< 0.1%

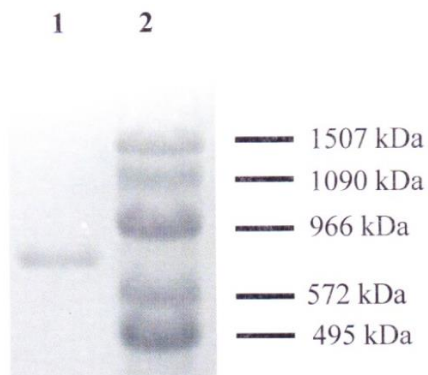


Figure 1. Electrophoretic analysis of Select-HA B1000K-00512

Select-HAs were run on 0.7% agarose gel and stained with Stains-All (0.005-0.01% of Stains-All in 50% ethanol; overnight with gentle shaking). **Lane 1**, Lot B1000K-00512; **lane 2**, Select-HA™ Ladder (molecular masses are indicated).

Molecular Masses

Values as determined by Multi-angle Laser Light Scattering-Size Exclusion Chromatography (SEC-MALLS) are typically within \pm 5%.

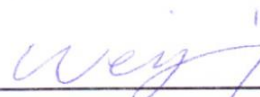
Mn: 835 kDa

Mw: 837 kDa


Mw/Mn: 1.003

QC Acceptance Date

Dec 2005



Wei Jing, M.D., Ph.D.



Michael Haller, Ph.D.