



655 Research Parkway  
Suite 525  
Oklahoma City, OK 73104  
Phone: 405-271-1544  
Fax: 405-271-1545  
E-mail: info@hyalose.com  
www.hyalose.com

## Certificate of Analysis

### Select-HA™ 601kEF

Catalogue No.: HYA-601kEF-1

Lot No.: 601kEF-2012A

Molecular Mass: 600.6 kDa

#### Appearance

Ranging from white crystalline to clear,  
glassy solids

#### Quantity

1 mg

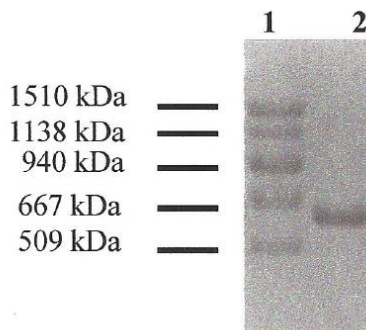
(determined by Carbazole Assay based on  
free acid form)

#### Protein Content

< 0.1%

#### Endotoxin

< 0.1 EU/mg HA



**Figure 1. Electrophoretic analysis of Select-HA.** Select-HAs were run on 0.8% agarose gel and stained with Stains-all (0.005 – 0.01% Stains-all in 50% ethanol; overnight with gentle shaking). **Lane 1**, Select-HA Ladder™ (molecular masses are indicated); **lane 2**, Lot 601kEF-2012A

#### Molecular Masses

Values as determined by Multi-angle Laser Light Scattering-Size Exclusion Chromatography (MALLS-SEC) are typically within  $\pm 5\%$ . Results here are the average of duplicate analysis.

*M<sub>n</sub>*: 594.6 kDa

*M<sub>w</sub>*: 600.6 kDa

*M<sub>w</sub>/M<sub>n</sub>*: 1.01

#### QC Acceptance Date

January 2012

F. Michael Haller, Ph.D.

Jonathan Roberts