



655 Research Parkway
Suite 525
Oklahoma City, OK 73104
Phone: 405-271-1544
Fax: 405-271-1545
E-mail: info@hyalose.com
www.hyalose.com

Certificate of Analysis

Select-HA™ 500k

Catalogue No.: HYA-500KEF-1

Lot No.: 500k-201506

Molecular Mass: 484.9 kDa

Appearance

Ranging from white crystalline to clear glassy solids

Quantity

1 mg

(determined by Carbazole Assay based on free acid form)

Protein Content

< 0.1%

Endotoxin Level

< 0.1 EU/mg

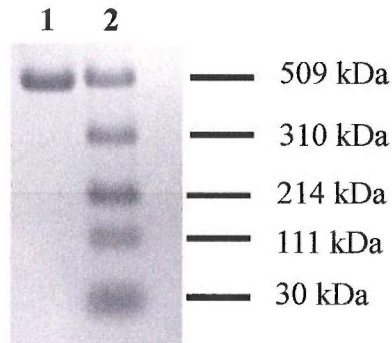


Figure 1. Electrophoretic analysis of Select-HA. Select-HAs were run on 0.8 % agarose gel and stained with Stains-all (0.005 – 0.01% Stains-all in 50% ethanol; overnight with gentle shaking). **lane 1**, Select-HA 500k-201506. **Lane 2**, Select-HA™ LoLadder (Lot LL201305; molecular masses are indicated).

Molecular Masses

Values as determined by Multi-angle Laser Light Scattering-Size Exclusion Chromatography (MALLS-SEC) are typically within $\pm 5\%$. Results here are the average of duplicate analysis.

Mn: 484.8 kDa


Mw: 484.9 kDa

Mw/Mn: 1.000

QC Acceptance Date

May 2015


Wei Jing, M.D., Ph.D.


Jonathan Roberts, BS