



655 Research Parkway
Suite 525
Oklahoma City, OK 73104
Phone: 405-271-1544
Fax: 405-271-1545
E-mail: info@hyalose.com
www.hyalose.com

Certificate of Analysis

Select-HATM 1000k

Catalogue No.: HYA-1000KEF-1

Lot No.: 1000k-201502

Molecular Mass: 1071 kDa

Appearance

Ranging from white crystalline to clear, glassy solids

Quantity

1 mg

(determined by Carbazole Assay based on free acid form)

Protein Content

< 0.1%

Endotoxin

< 0.1 EU/mg

Molecular Masses

Values as determined by Multi-angle Laser Light Scattering-Size Exclusion Chromatography (MALLS-SEC) are typically within $\pm 5\%$. Results here are the average of duplicate analysis.

Mn: 1033 kDa

Mw: 1071 kDa

Mw/Mn: 1.036

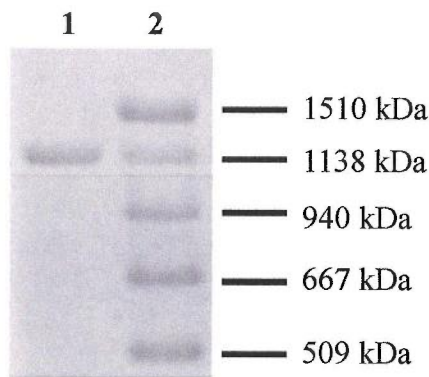


Figure 1. Electrophoretic analysis of Select-HA. Select-HAs were run on 0.7 % agarose gel and stained with Stains-all (0.005 – 0.01% of Stains-all in 50% ethanol; overnight with gentle shaking). **lane 1**, 1000k-201502; **Lane 2**, Select-HATM Ladder (molecular masses are indicated).

QC Acceptance Date

February 2015

Wei Jing

Jonathan Roberts